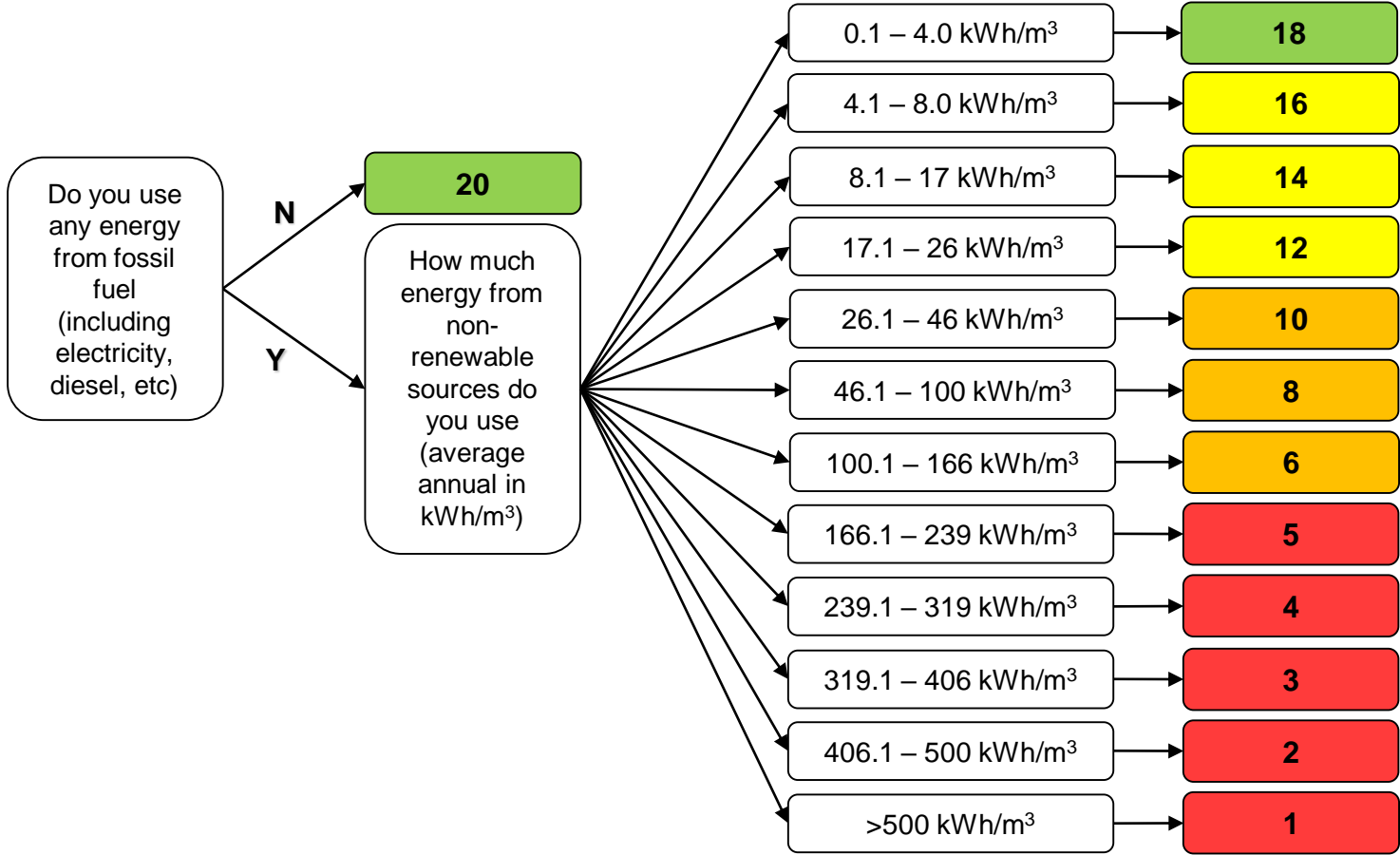
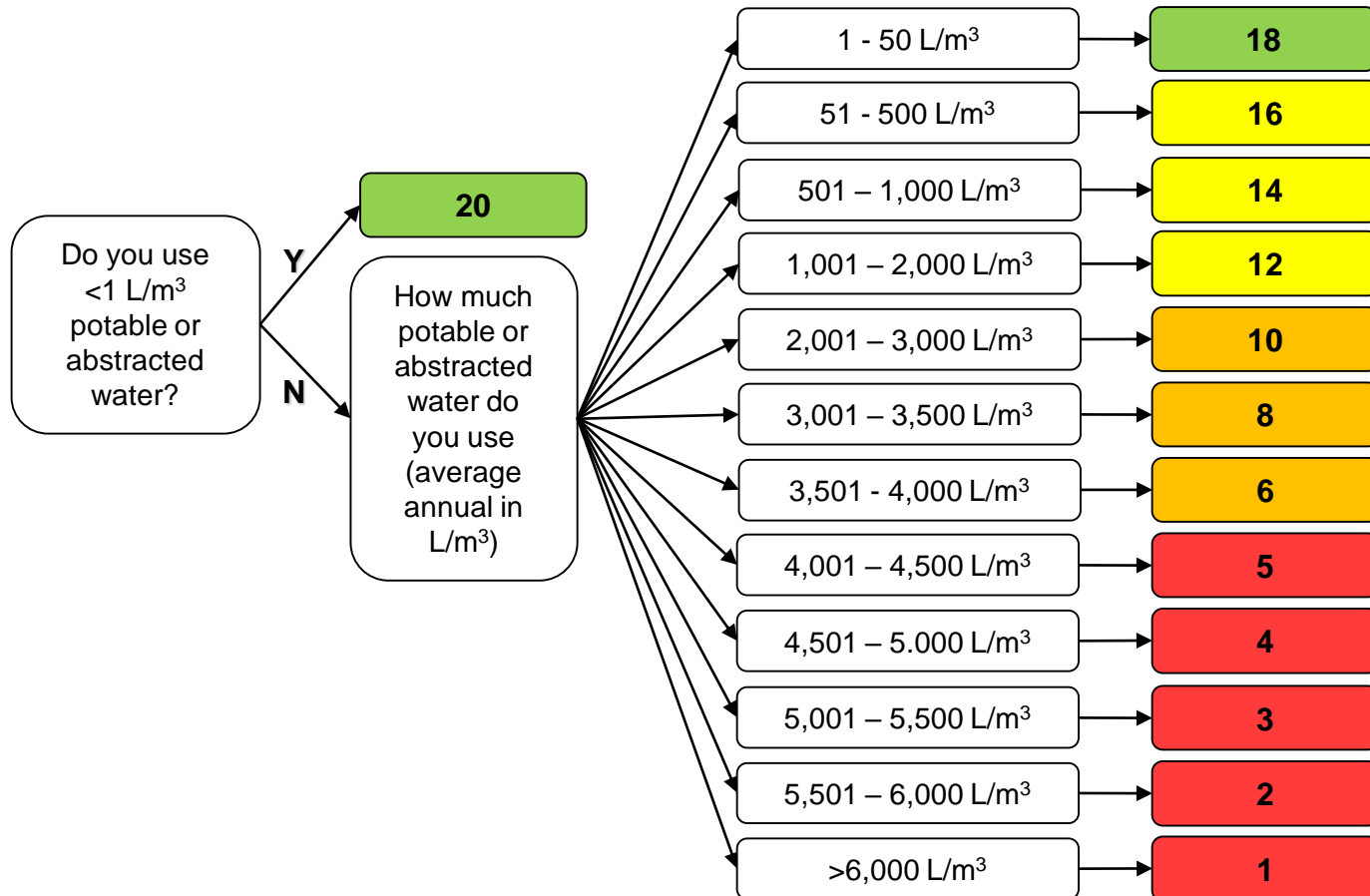


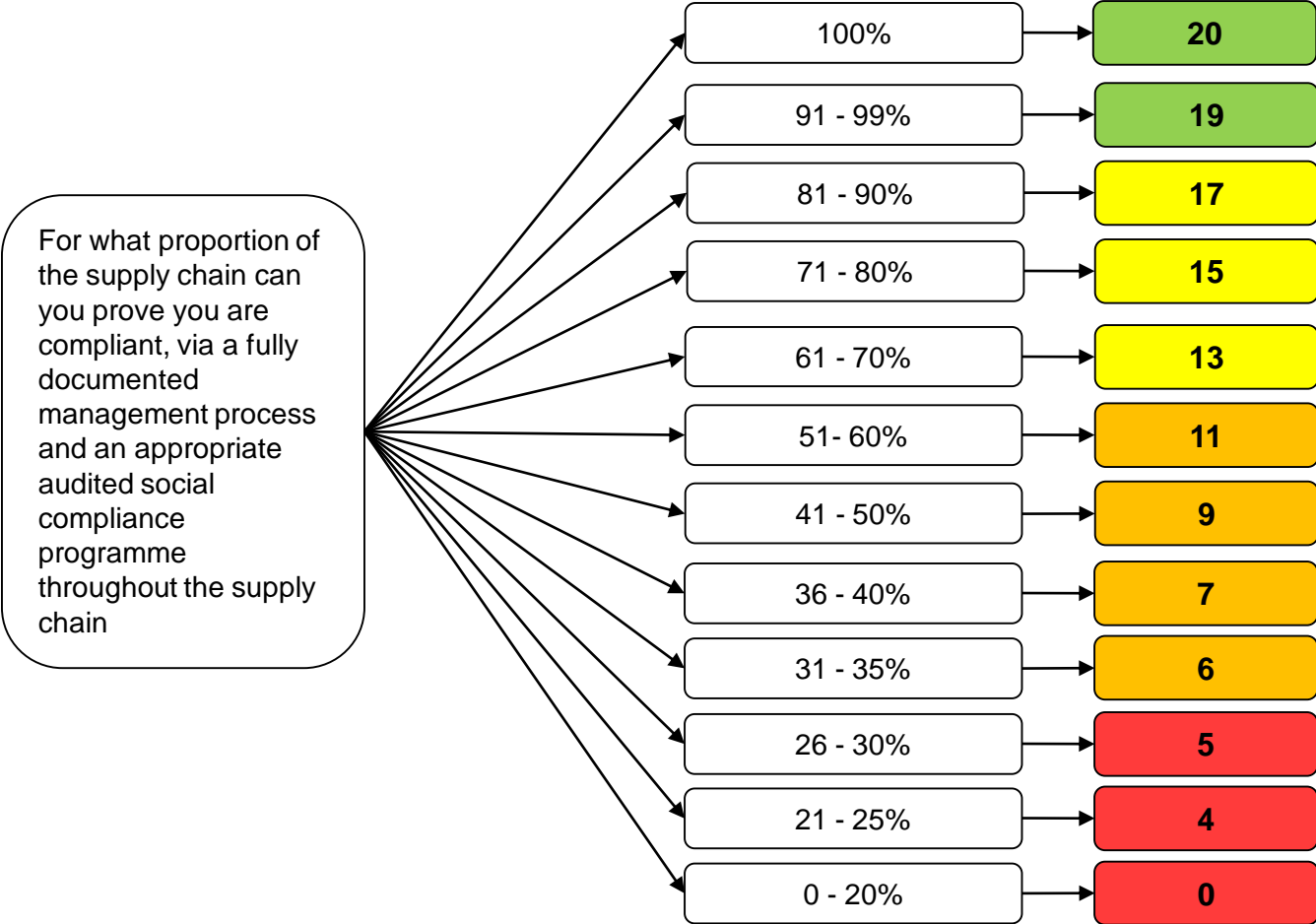
# Energy Use



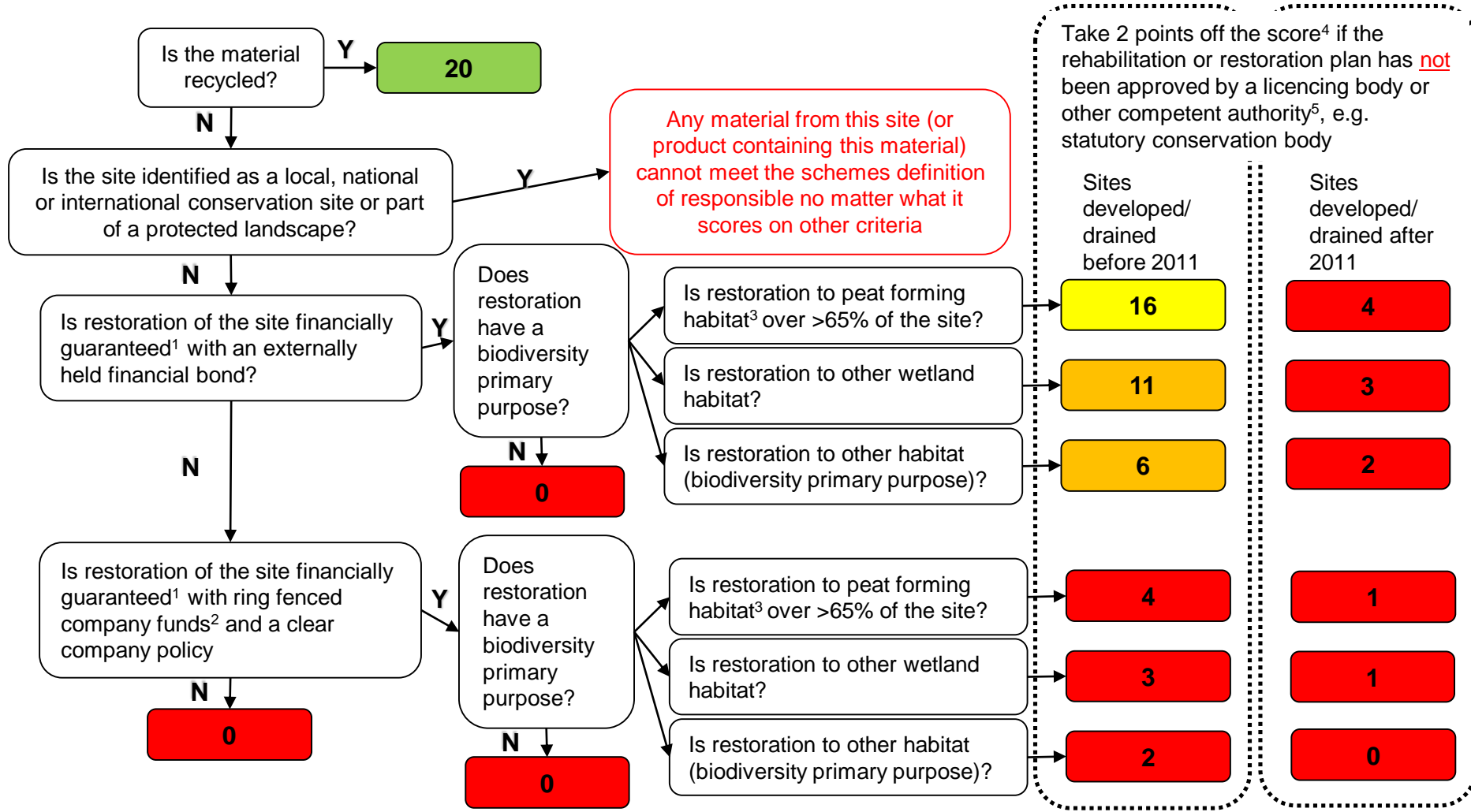
# Water Use



# Social Compliance



# Habitat and Biodiversity – Peat



<sup>1</sup> that guarantees sufficient resource for restoration of the site

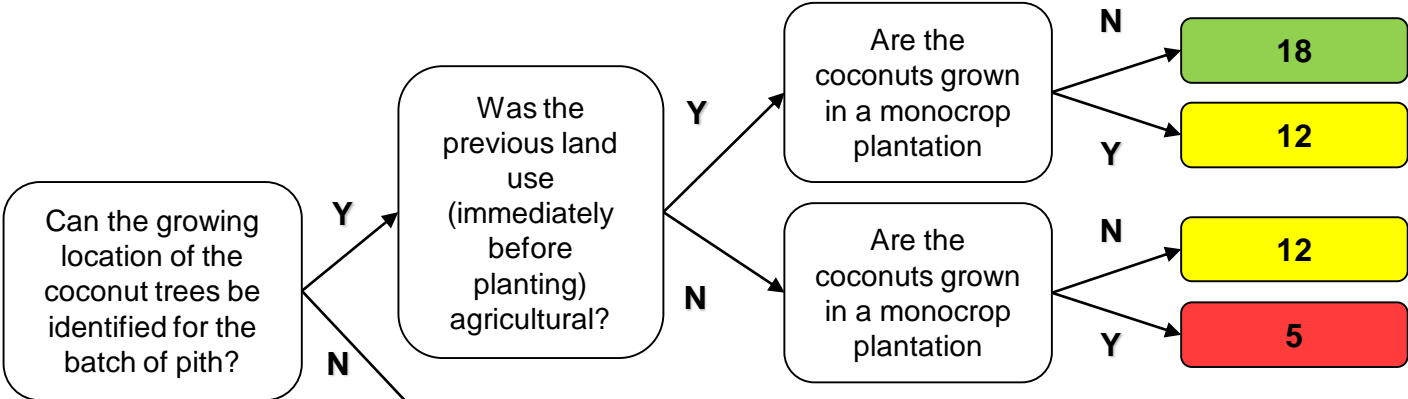
<sup>2</sup> published in company's public accounts NB: Company track record of restoration is not sufficient

<sup>3</sup> appropriate to the country of the site (as demonstrated by restoring hydrological conditions)

<sup>4</sup> Negative scores are rounded to zero

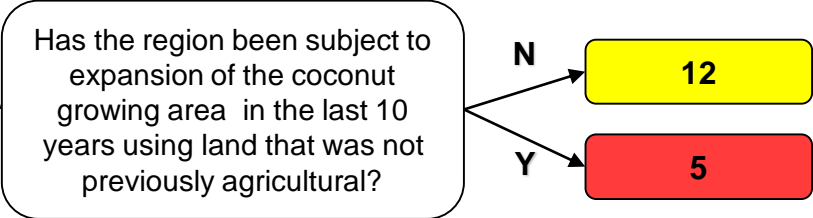
<sup>5</sup> Where there is no Competent Authority an alternative external reviewer must be agreed with the Technical Committee

# Habitat and Biodiversity – Coir

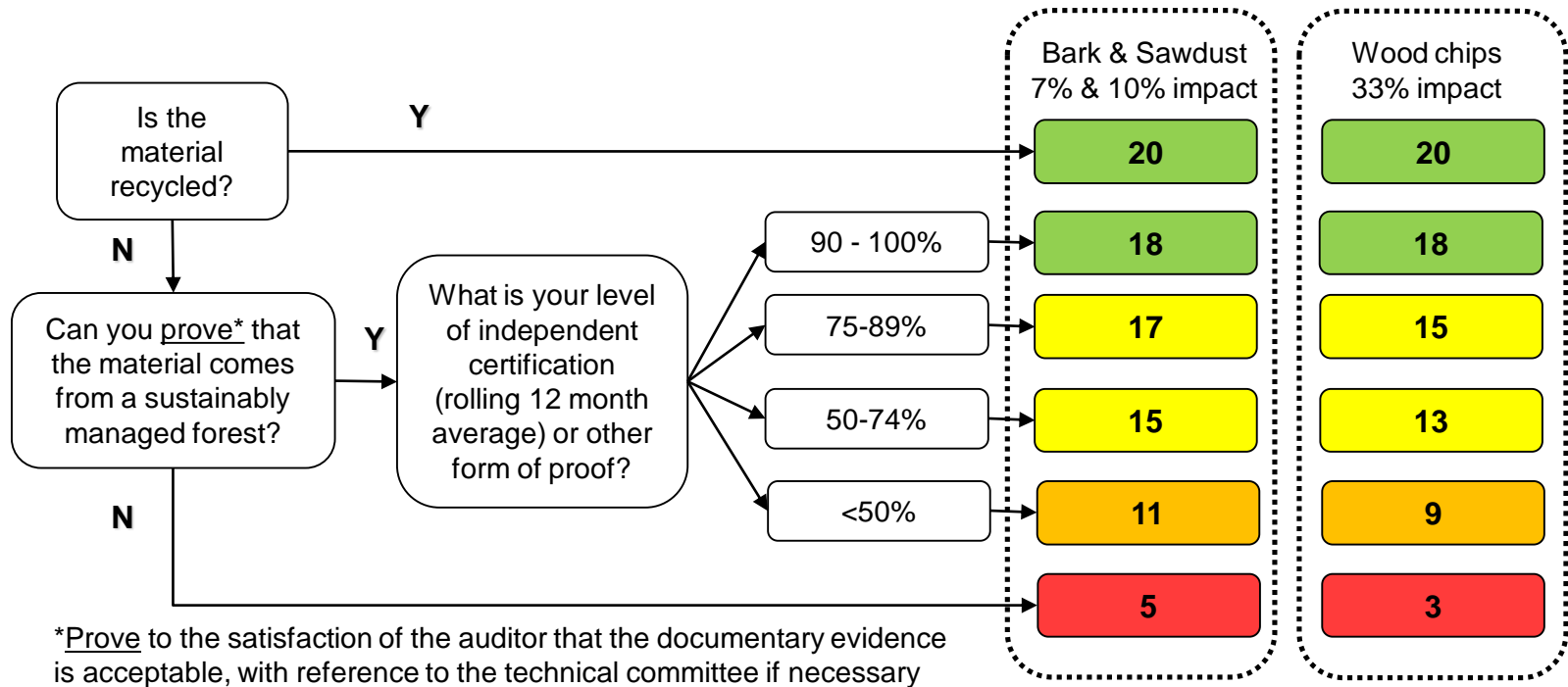


Known (annual) batch source(s).

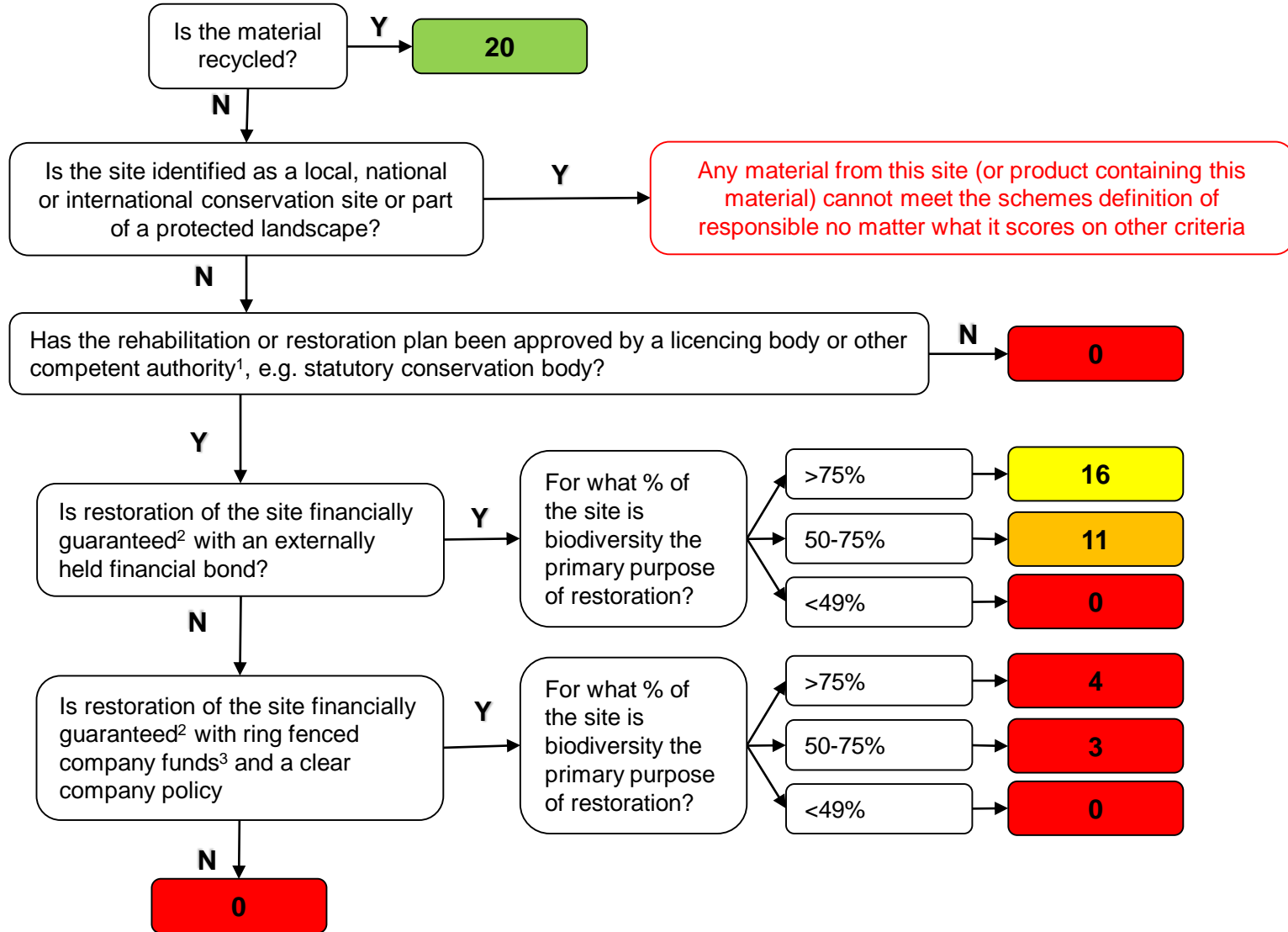
Regional assessment used when impact on habitat and biodiversity cannot be assessed at originator site.



# Habitat and Biodiversity – Wood Based Material



# Habitat and Biodiversity – Minerals

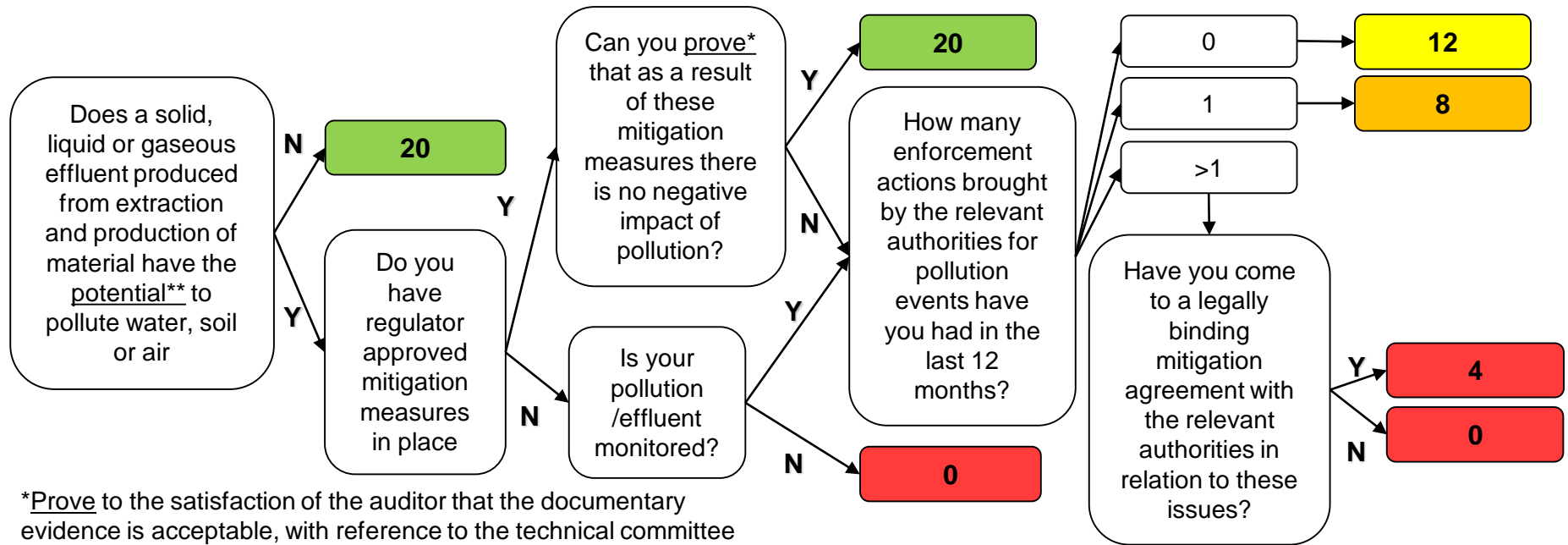


<sup>1</sup> Where there is no Competent Authority an alternative external reviewer must be agreed with the Technical Committee

<sup>2</sup> that guarantees sufficient resource for restoration of the site

<sup>3</sup> published in company's public accounts NB: Company track record of restoration is not sufficient

# Pollution

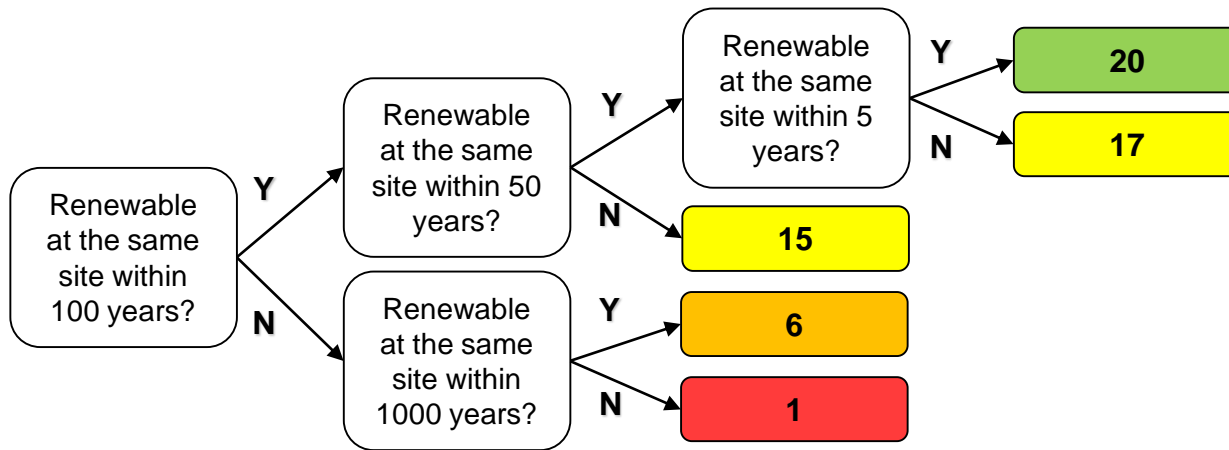


\*Prove to the satisfaction of the auditor that the documentary evidence is acceptable, with reference to the technical committee if necessary

\*\* Potential to pollute is a theoretical possibility without mitigation measures



# Renewability



# Resource Use Efficiency

